

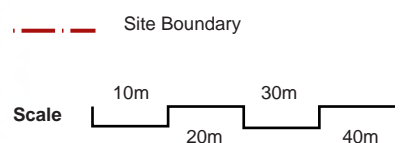


- LEGEND
- RE1 Site Boundary
 - 1 Through Site Links (Public)
 - 2 Possible Future Public Open Space / New Road by Others
 - 3 Communal Open Space
 - 4 Access stairs
 - 5 External lifts
 - 6 Water Feature
 - 7 Catti Creek
 - 8 Basement Driveway
 - 9 Timber Bridge/ Crossing
 - 10 Pergola Structures/ Entry Structures
 - 11 Open Turf Area / Parkland
 - 12 Amenity Mass Planting
 - 13 Riparian Corridor Planting
 - 14 Hedge Planting for Screening
 - 15 Public Shelter/ Amenity
 - 16 Ground Floor Retail
 - 17 Look Out/Seating
 - 18 Cafe Corner Activation
 - 19 Public 3m Through Site Link
 - 20 Fence & Gate to Private Communal Open Spaces
 - 21 Catti Creek Cycleway
 - 22 Residential Private Balconies

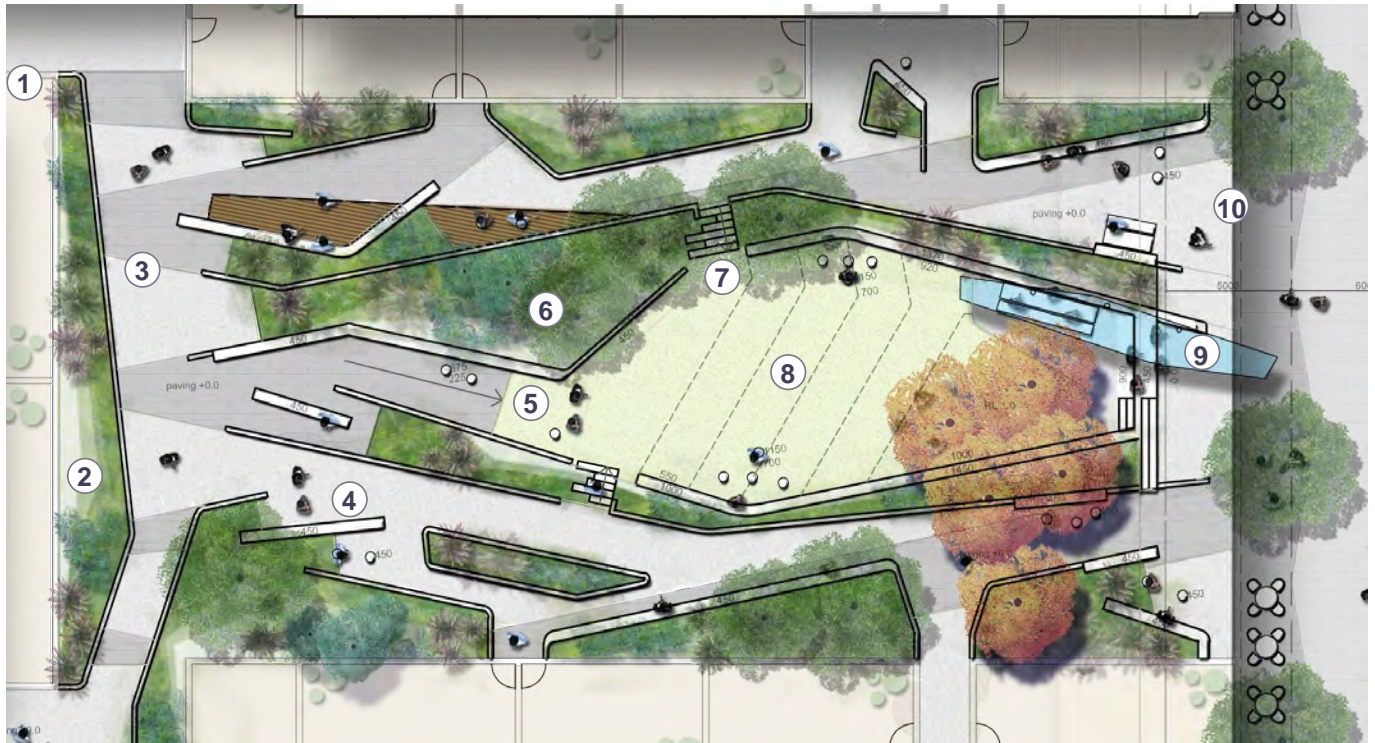


MASTERPLAN SITES

1. Streetscape - Retail to Street Interface
2. Streetscape - Courtyard to Street Interface
3. Streetscape - Typical street
4. Site D1 - Overpass Connection
5. Site D1 - Communal podium courtyard
6. Site D1 - Level 10 Communal roof terrace
7. Through site link
8. Site D2 - Communal courtyard
9. Site D3 - Communal courtyard
10. Pedestrian Walk - Portal to Station
11. Pedestrian Walk - Eastern Walkway
12. Pedestrian Walk - Pocket Park



SITE D1 - COMMUNAL PODIUM COURTYARD



PRECEDENT IMAGES



Pergola



Deck flush with paving



Planting beds with tree planting

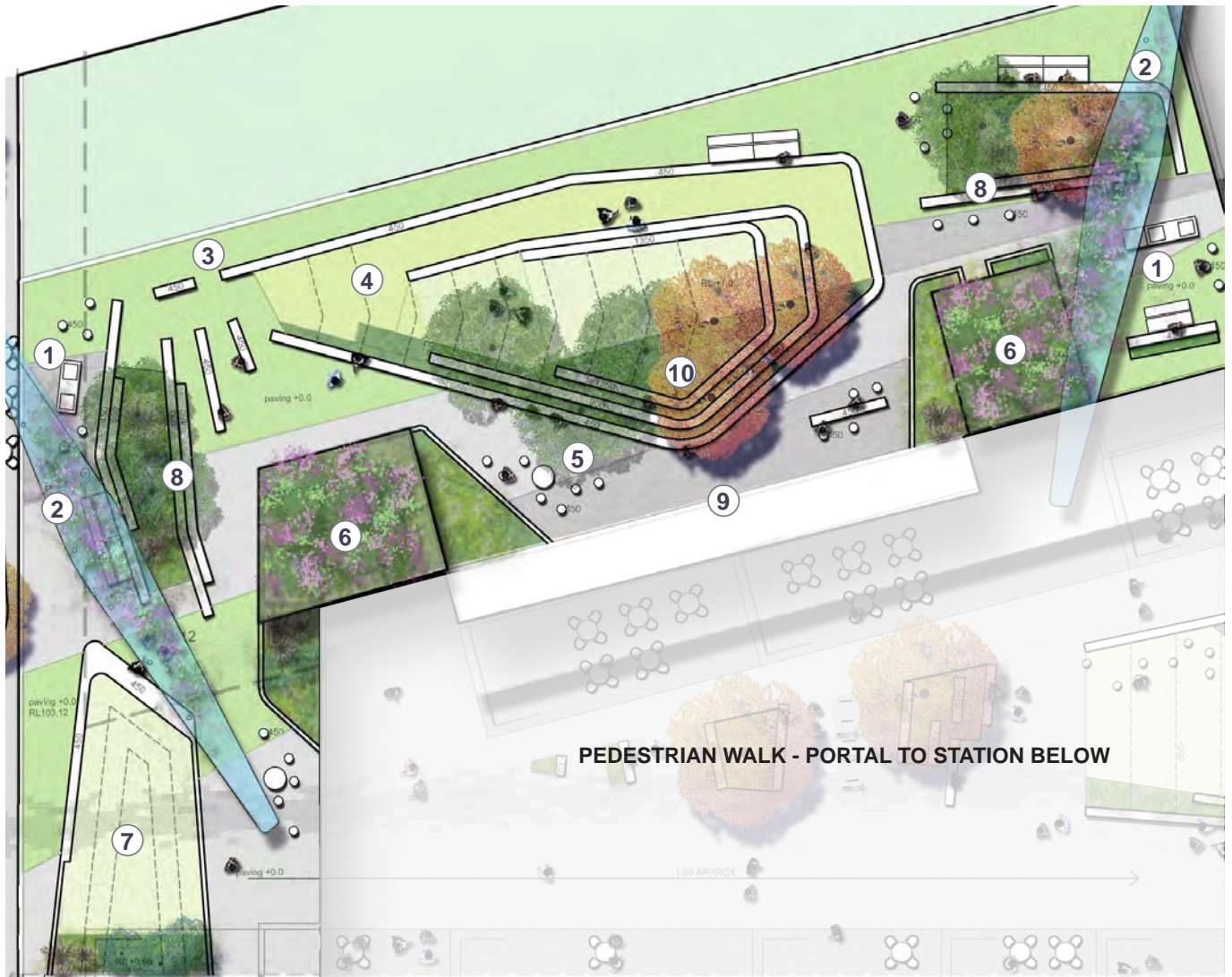


NOTES

1. Access gate to communal courtyard areas from private courtyards.
2. Raised planted beds as layered buffer to private courtyards.
3. Two tone paving layout to reinforce forms and setouts.
4. Multiple small group social spaces. Allow planting to spill down to paving edge between separated walls to create better sense of connection to gardens.
5. Equal access to graded lawn up to raised lawn in terraced concrete seating elements.
6. Extensive wide island garden beds to generate a sense of areas separation and layered depth of planting
7. Midway concrete finger access through planting to raised lawn areas.
8. Main central raised lawn areas.
9. Long Board pergolas, painted steel and hardwood with flowering vines.
10. Painted steel palisade fences to podium courtyard boundary.



SITE D1 - LV10 ROOF TERRACE



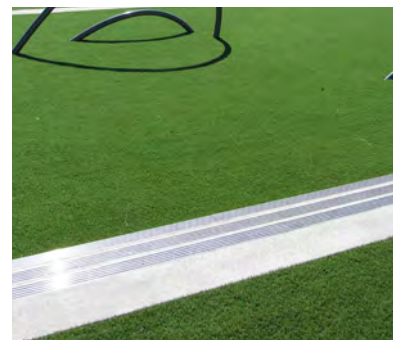
PRECEDENT IMAGES



Flowering vines



Concrete stools inset into planting



Artificial turf

NOTES

1. Communal BBQ areas.
2. Long Board pergolas, painted steel and hardwood with flowering vines.
3. Artificial turf to ground areas.
4. Real turf graded up to concrete terraced lounging edges overlooking surrounding areas.
5. Multiple smaller group casual seating areas.
6. Planted roofs to lift and fire stair access and utilities overrun.
7. Alternative open lawn area and planting and access to private unit courtyard.
8. Use in situ concrete benches/ retaining edges to mound soil for garden and tree planting.
9. Painted steel palisade fences to roof boundary.
10. Locate ornamental flowering shade trees for a variety of activity areas depending on climate.

SHOWGROUND STATION PRECINCT
CASTLE HILL MASTERPLAN

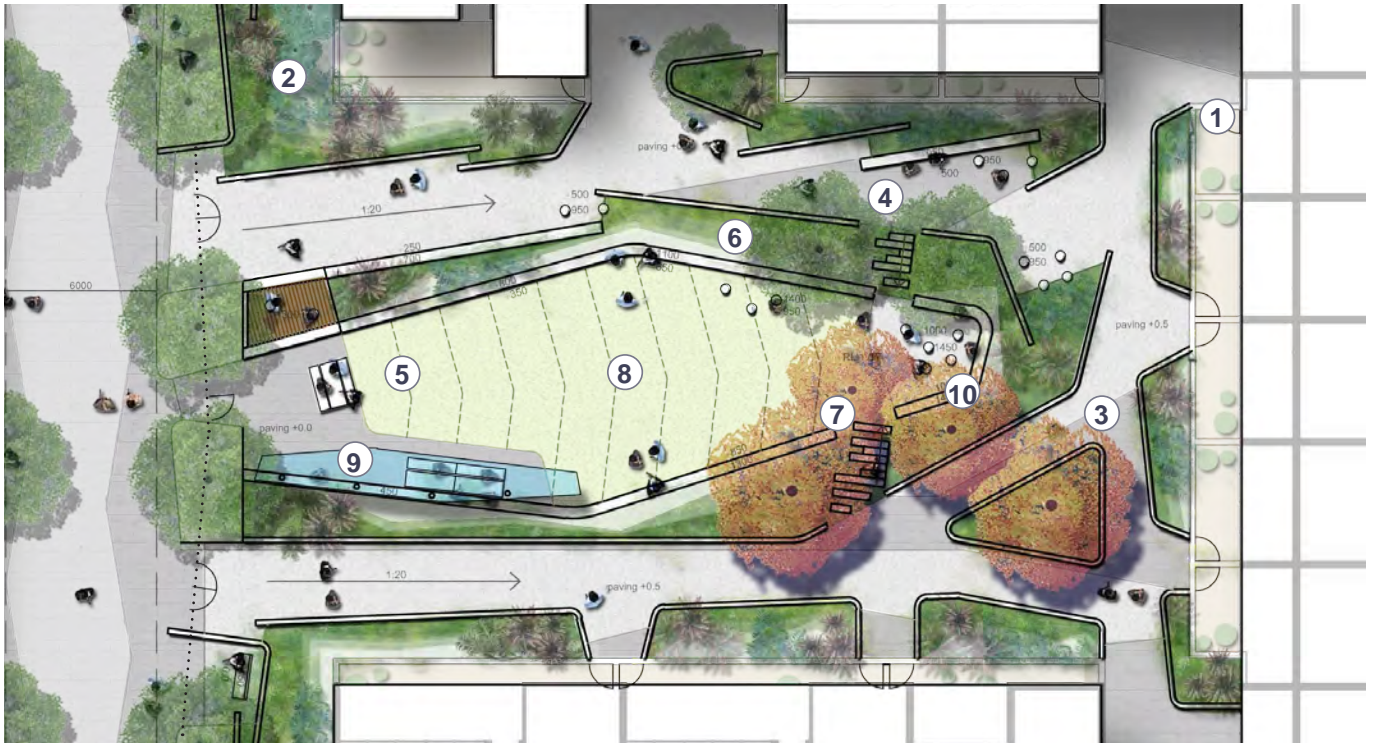


Scale 1:400 @ A4

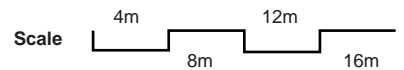


Suite 91, L5, 330 Watlie St
Ultima NSW 2007
T. 02 9211 3744
W. www.sturt-noble.com.au
landscape architecture
environmental & urban design

SITE D2 - COMMUNAL COURTYARD



PRECEDENT IMAGES



Raised planter



Extensive garden beds



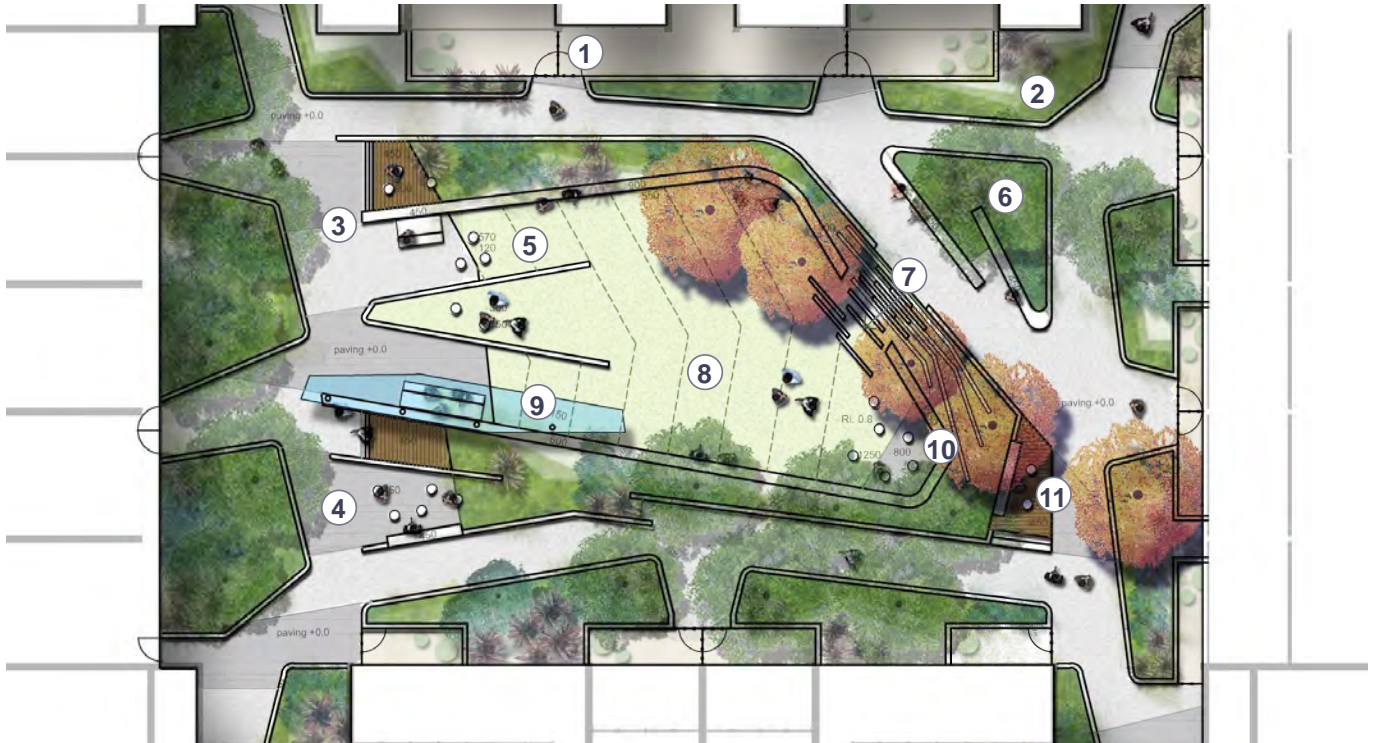
Concrete steps in planting

NOTES

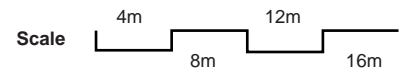
1. Access gate to communal courtyard areas from private courtyards.
2. Raised planted beds as layered buffer to private courtyards.
3. Two tone paving layout to reinforce forms and setouts.
4. Multiple small group social spaces. Allow planting to spill down to paving edge between separated walls to create better sense of connection to gardens.
5. Equal access to graded lawn up to raised lawn in terraced concrete seating elements.
6. Extensive wide island garden beds to generate a sense of areas separation and layered depth of planting
7. Midway concrete finger access through planting to raised lawn areas.
8. Main central raised lawn areas.
9. Long Board pergolas, painted steel and hardwood with flowering vines.
10. Raised and paved informal seating areas in lush low maintenance planting.



SITE D3 - COMMUNAL COURTYARD



PRECEDENT IMAGES



Island planter with curved edge



Steps bleeding into planting



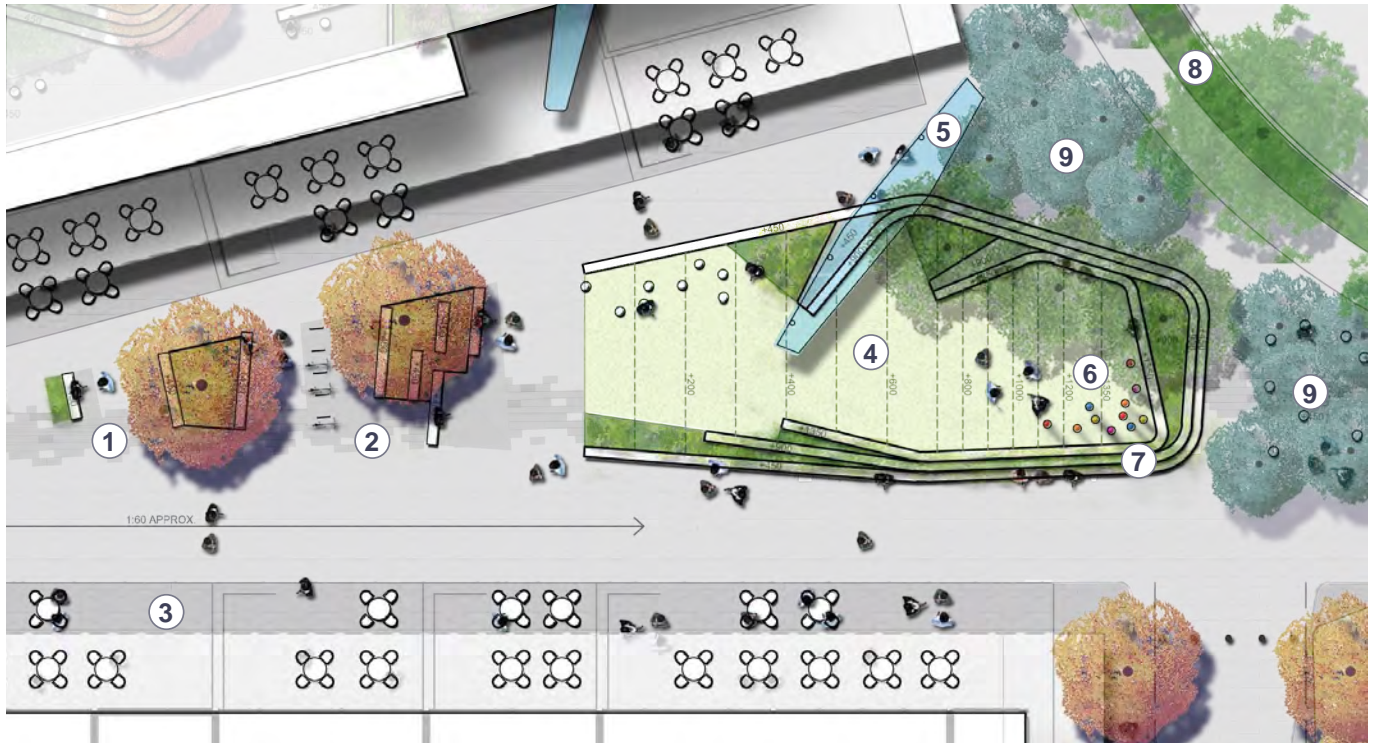
Raised timber deck against planting

NOTES

1. Access gate to communal courtyard areas from private courtyards.
2. Raised planted beds as layered buffer to private courtyards.
3. Two tone paving layout to reinforce forms and setouts.
4. Multiple small group social spaces. Allow planting to spill down to paving edge between separated walls to create better sense of connection to gardens.
5. Equal access to graded lawn up to raised lawn in terraced concrete seating elements.
6. Extensive wide island garden beds to generate a sense of areas separation and layered depth of planting
7. Midway concrete finger access through planting to raised lawn areas.
8. Main central raised lawn areas.
9. Long Board pergolas, painted steel and hardwood with flowering vines.
10. Raised and paved informal seating areas in lush low maintenance planting.
11. Small raised timber deck elements with in situ concrete seating.



PEDESTRIAN WALK - PORTAL TO STATION



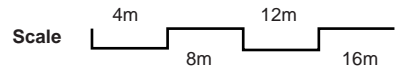
PRECEDENT IMAGES



Raised lawn



Paving pattern



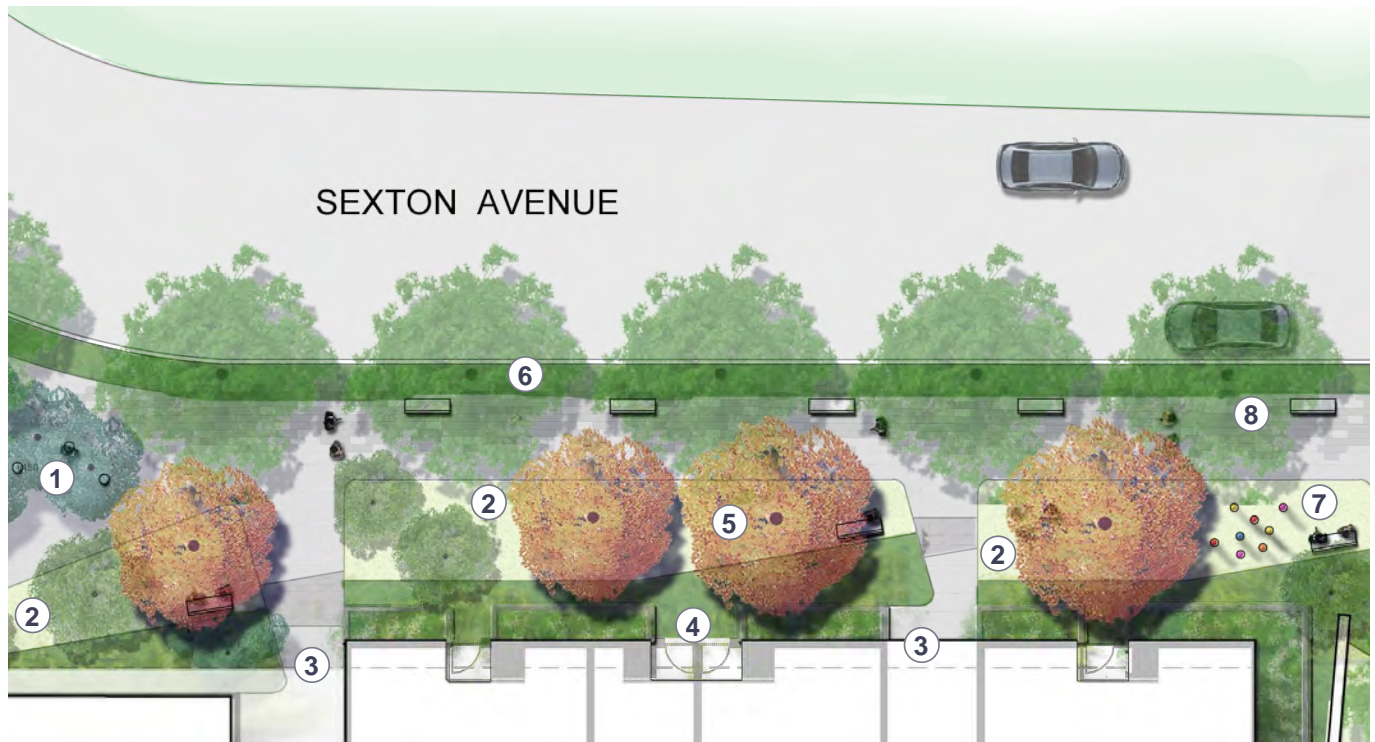
Grove planting

NOTES

1. Define generous cross site access with set out of combined seat edges and mounded low planting and feature trees.
2. Bicycle parking and other utilities located within paving pattern set out from north to south linking the length of the pedestrian public walkway.
3. Breakout café/ retail seating and eating areas.
4. Equal access to graded lawn up to raised lawn in terraced concrete seating elements.
5. Long Board Pergola providing additional shade from direct overhead summer sun and a visual sculptural feature defining view lines to and through the central retail plaza.
6. Public art installation provides atmosphere and a visual link along the length of the north south walkway.
7. Three 450mm (seating height) concrete terrace edges stepping up to lawn and separated by lush low maintenance planting. Terraces provide views along the length of the walkway and through surrounding ornamental tree groves.
8. Grand street trees in a dense low maintenance planted verge.
9. Densely planted groves of ornamental seasonally changing trees with raised canopies. Planted in ground and interspersed with concrete barrel seating stools.



PEDESTRIAN WALK - EASTERN WALKWAY



PRECEDENT IMAGES



Planted verge with street trees



Variety of planting



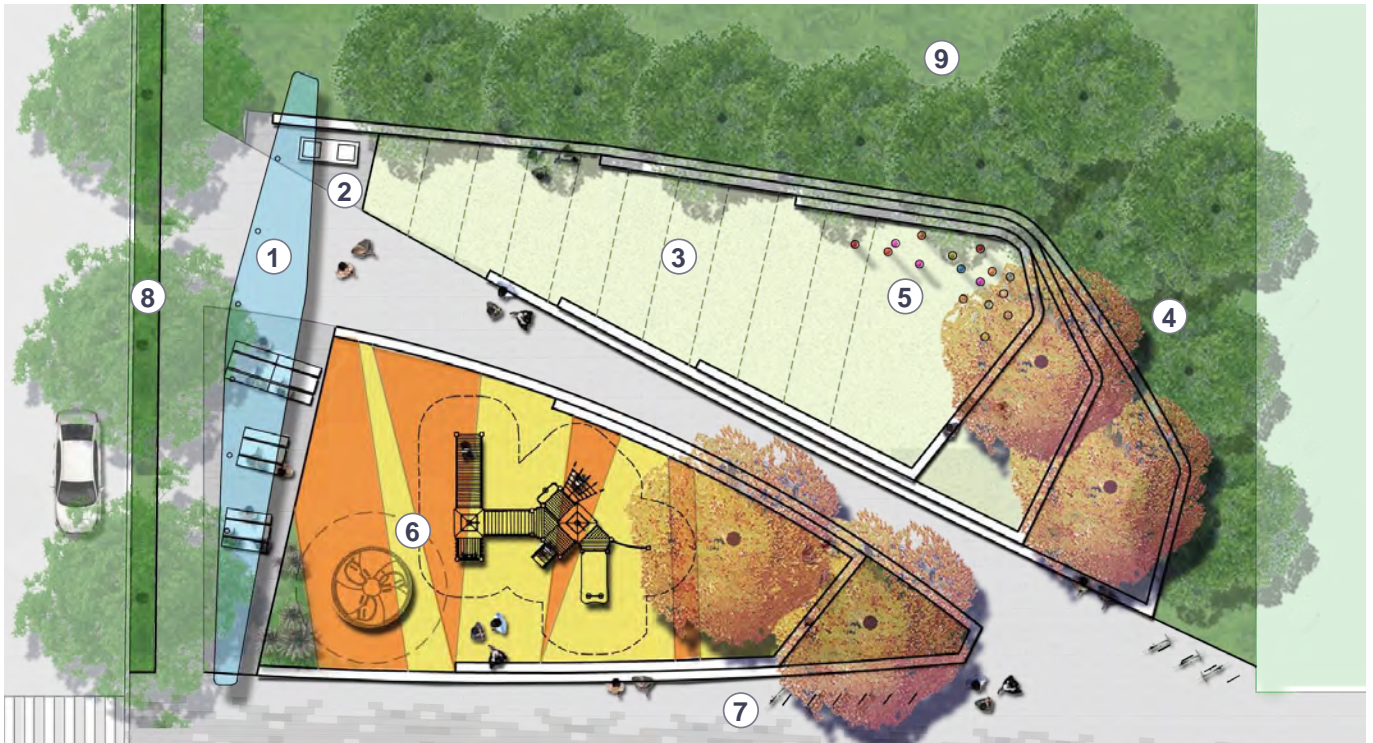
Feature tree planting

NOTES

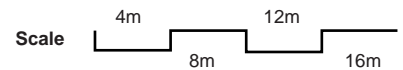
1. Densely planted groves of ornamental seasonally changing trees with raised canopies. Planted in ground and interspersed with concrete barrel seating stools.
2. Generous lawn areas create a sense of a linear public park adjoining the north south walkway.
3. Paved access to foyer entries.
4. Informal stepping stone access from private courtyards to public planted and lawn areas.
5. Second row of grand trees to generate a seasonally changing tree avenue along the north south public walkway.
6. Grand street trees in a dense low maintenance planted verge.
7. Public art installation provides atmosphere and a visual link along the length of the north south walkway.
8. Bicycle parking and other utilities located within paving pattern set out from north to south linking the length of the pedestrian public walkway



PEDESTRIAN WALK - POCKET PARK



PRECEDENT IMAGES



Colourful softfall



Picnic seating area



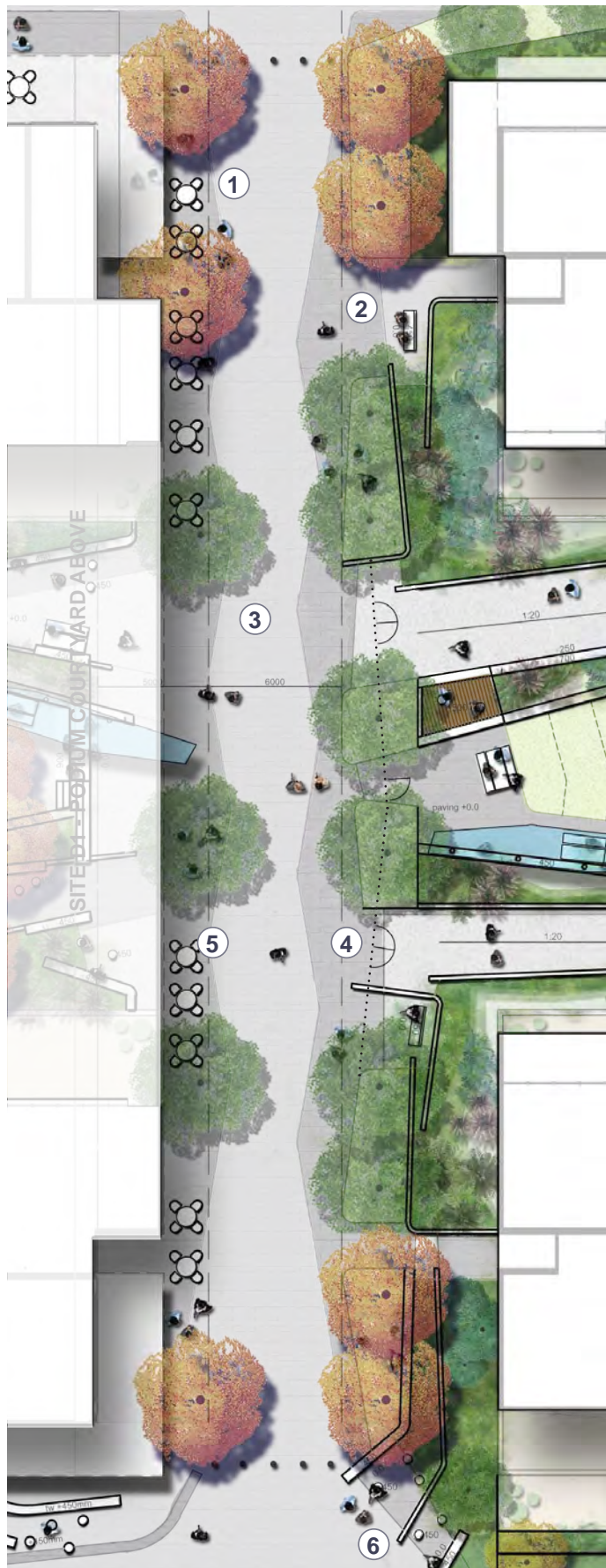
Public art installation

NOTES

1. Long Board pergolas, painted steel and hardwood with flowering vines.
2. Communal BBQ areas with dedicated picnic tables and benches and many informal bench edge and lawn picnic areas.
3. Equal access to graded lawn up to raised lawn in terraced concrete seating elements.
4. Grove of large seasonally changing ornamental trees
5. Public art installation provides atmosphere and a visual link along the length of the north south walkway.
6. Children's public play facility with prefabricated and adventure play elements.
7. Bicycle parking and other utilities located within paving pattern set out from north to south linking the length of the pedestrian public walkway.
8. Grand street trees in a dense low maintenance planted verge.
9. Layered low maintenance understory planting as visual backdrop to park areas and buffer to surrounding developments and childcare centre. Can include nature walk path.

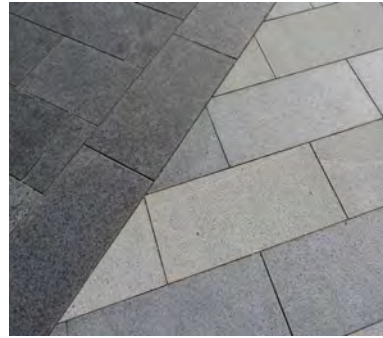


THROUGH SITE LINK



Scale 0 4m 8m 12m 16m

PRECEDENT IMAGES



Two tone paving



Feature tree planting



Outdoor retail seating

NOTES

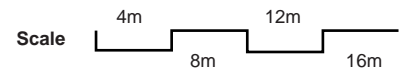
1. Access to through site link from north south walkway. Retail break out seating areas extending under cantilevered building edge.
2. Casual seating bays addressing the public walkway at the private lobby entry areas.
3. Two tone central paving layout allows unimpeded pedestrian flow and spill out from adjoining retail while allowing for emergency vehicle access requirements. Existing concrete footpath to be retained and made good where required
4. Open or card operated gate access to private communal courtyard areas.
5. Allow some tree planting to paved areas on north side of walkway to generate summer shade and a sense of sanctuary via partial canopy overhead.
6. Casual seating areas of in situ concrete benching and spill out planting at the western egress from the though site link.



STREETSCAPE- RETAIL TO STREET INTERAFCE



PRECEDENT IMAGES



Designated bike lane



Outdoor retail seating



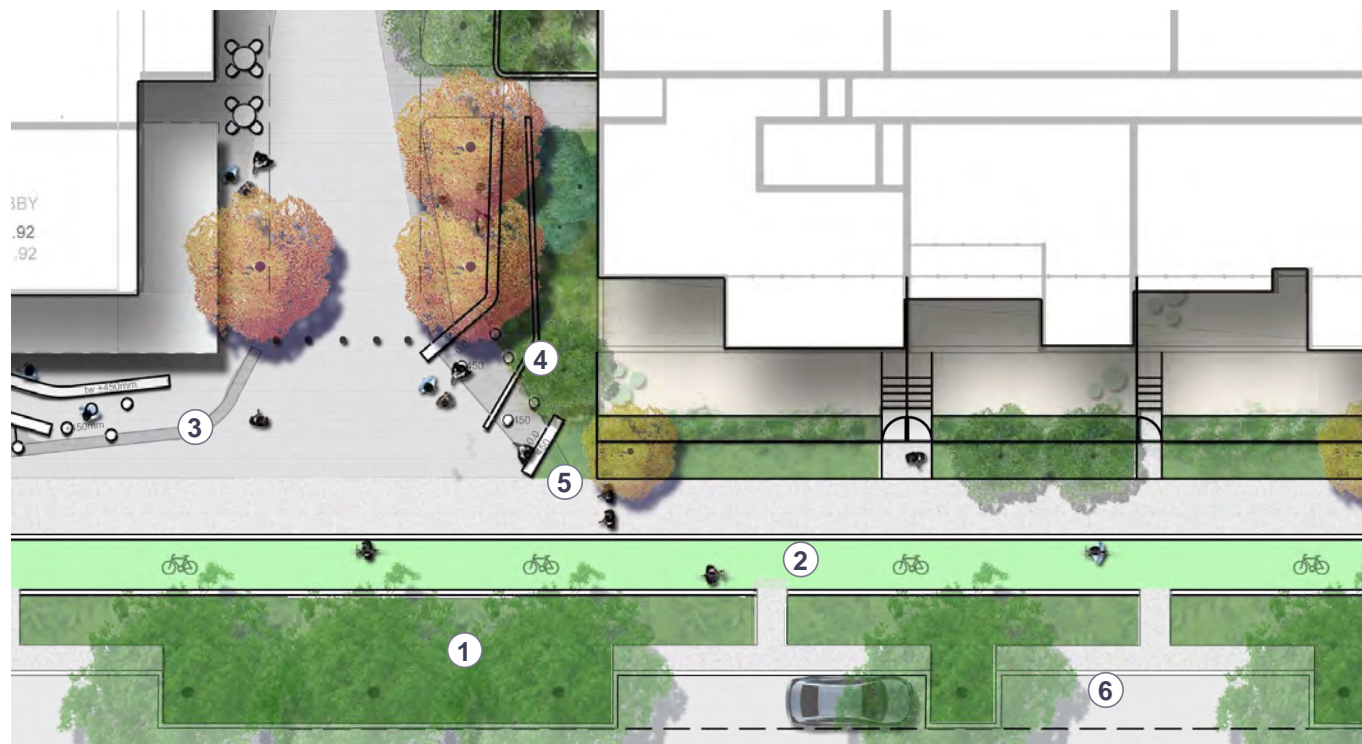
Concrete seating edge

NOTES

1. Grand street trees in a dense low maintenance planted verge.
2. Paving pattern/ detail in coordination with planting and bench seating installation.
3. Planting and bench seating installation allows soil to be graded up and planted to generate interest and present planting better. Planted islands also support shade trees and casual fixed seating areas and define dedicated retail seating areas.
4. Dedicated bicycle lane.
5. Grand street trees in a dense low maintenance planted verge. Wider planted version.
6. Low maintenance planting creates a green edge between the boundary fence and existing footpath
7. Decomposed granite path provides an accessible and permeable path around the edge of the building
8. Multiple casual seating areas of fixed benches and concrete barrel stool arrangements.



STREETSCAPE- COURTYARD TO STREET INTERFACE



PRECEDENT IMAGES



Varied planting



Dedicated bicycle lane



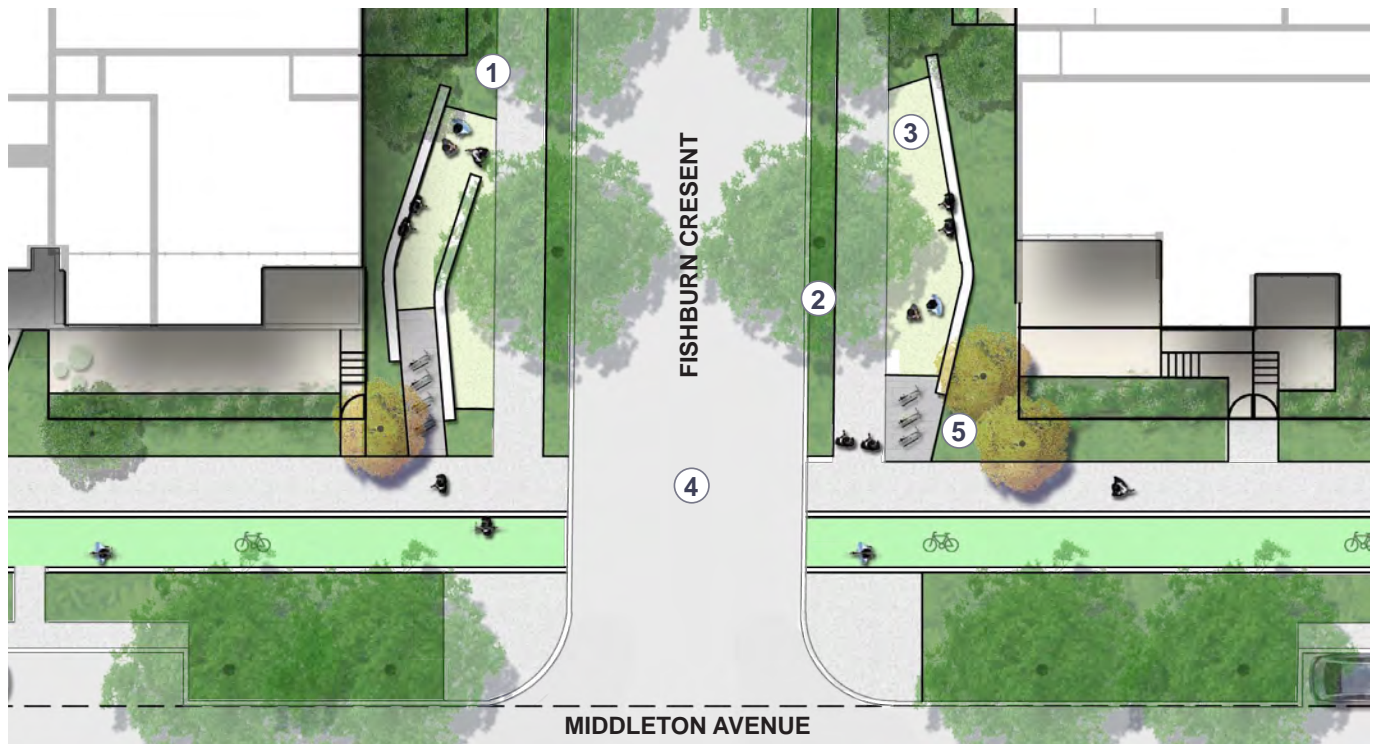
Planting and concrete bench

NOTES

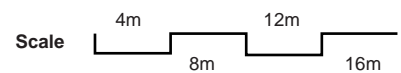
1. Grand street trees in a dense low maintenance planted verge. Wider planted version.
2. Dedicated bicycle lane.
3. Paving pattern/ detail in coordination with planting and bench seating installation.
4. Planting and bench seating installation allows soil to be graded up and planted to generate interest and present planting better. Planted islands also support shade trees and casual fixed seating areas and define dedicated retail seating areas.
5. Multiple casual seating areas of fixed benches and concrete barrel stool arrangements.
6. On street parking and pedestrian access.



STREETSCAPE- TYPICAL STREET



PRECEDENT IMAGES



300mm concrete hob wall



Verge planting



Layered planting

NOTES

1. Access gate to streetscape areas from private courtyards.
2. Grand street trees in a dense low maintenance planted verge.
3. Lawn and in situ concrete bench seating areas along streetscape walk.
4. Roadway.
5. Smaller ornamental trees to generate avenue tree walkway along public footpaths.

